

# BEAR





## Herren Elegant



0341 spezial 18-20 mm

**Solid**



0342 pol. 18-20 mm

**Solid**



1573 PVD gelb 18-20 mm

**Solid**



0343 PVD gelb pol. 18-20 mm

**Solid**



**Solid look**

0632 pol. 18-20 mm



**Solid look**

0632S PVD schwarz 18-20 mm



**Solid look**

0679 PVD gelb pol. 18-20 mm

## Herren Elegant



0420 pol. 16-20 mm



0421 comb. 16-20 mm



0422 hgp bic. 16-20 mm



0423 PVD gelb pol. 16-20 mm

# Herren Elegant



**Solid look**



1986 spezial 20-22 mm

**Solid look**



1986S PVD schwarz 20-22 mm

**Solid look**



1986R PVD rosé 20-22 mm

**Solid look**



0199 spezial 22-24 mm

**Solid look**



0199S PVD schwarz 22-24 mm

**Solid look**



0199R PVD rosé 22-24 mm



# Herren Elegant



**Solid look**

1421 comb. 18-20 mm



**Solid look**

1421S PVD schwarz 18-20 mm



**Solid look**

1423 PVD gelb 18-20 mm

**Solid look**

1422 comb. schwarz 18-20 mm



**Solid look**

1424 pol. 18-20 mm



**Solid look**

1424S PVD schwarz pol. 18-20 mm



## Herren Elegant

**Solid look**



0621 pol. 22-24 mm

**Solid look**



0622 satin 22-24 mm

**Solid look**



0622S PVD schwarz 22-24 mm

**Solid look**



0623 PVD bic. 22-24 mm

**Solid look**



0675 PVD gelb pol. 22-24 mm



## Herren Elegant



0429 spezial 20-22 mm



0430 satin 20-22 mm

0222 spezial 18-20 mm



0321 PVD schwarz 18-20 mm



1776 PVD gelb 18-20 mm



0372 PVD bic. 18-20 mm



## Herren Elegant

2080 satin 16-18 mm  
2081 satin 18-20 mm  
0112 satin 20 mm  
0114 satin 20-22 mm



2081S PVD schwarz 18-20 mm  
0112S PVD schwarz 20 mm



**BEAR**



# Herren Elegant



## Federschließe



1957 comb. 18-20 mm



1964 PVD gelb 18-20 mm

1959 comb. 18-20 mm



1960 spezial 18-20 mm  
2137 spezial 20-22 mm  
2138 spezial 22-24 mm



1958 PVD gelb 18-20 mm



## Herren Elegant



0344 spezial 18-20 mm



0362 satin 18-20 mm



2036 hgp bic. 18-20 mm



1971 hgp 18-20 mm



0257 spezial 18-20 mm



0258 PVD bic. 18-20 mm



0259 PVD gelb 18-20 mm





0480 spezial 18-20 mm



0480S PVD schwarz 18-20 mm

0478 pol. 18-20 mm



0479 comb. 18-20 mm



0680 PVD gelb pol. 18-20 mm



**Herren Elegant**

0481 spezial 18-20 mm



0482 PVD bic. 18-20 mm



0666 spezial 18-20 mm



0667 PVD bic. 18-20 mm



0674 PVD gelb 18-20 mm



## Herren Elegant



0458 comb.18-20 mm



0459 hgp bic. 18-20 mm



1772 PVD gelb 18-20 mm



XL

0435 comb. 20-22 mm xl



0436 comb. 20-22 mm



0437 hgp bic. 20-22 mm

**Herren Elegant**

0450 comb. 20-22 mm



0452 hgp bic. 20-22 mm



Damen Elegant



0226 pol. 8-12 mm



0317 hgp bic. 8-12 mm



1560 PVD gelb pol. 8-12 mm

0225 pol. 9-14 mm



1514 PVD gelb pol. 9-14 mm



**Damen Elegant**

2086 satin 12-14 mm  
0113 satin 14-16 mm



0425 pol. 11-14 mm



0426 comb. 11-14 mm



0427 hgp bic. 11-14 mm



0428 PVD gelb pol. 11-14 mm



## Damen Elegant



0149 comb.12-14 mm

0277 hgp bic. 12-14 mm

1765 PVD gelb 12-14 mm



0125 spezial 12-14 mm

0252 hgp bic. 12-14 mm

0251 hgp 12-14 mm



**Damen Elegant**

0487 comb. 12-14 mm



0488 hgp bic. 12-14 mm



0668 spezial 12-14 mm



0668S PVD schwarz 12-14 mm

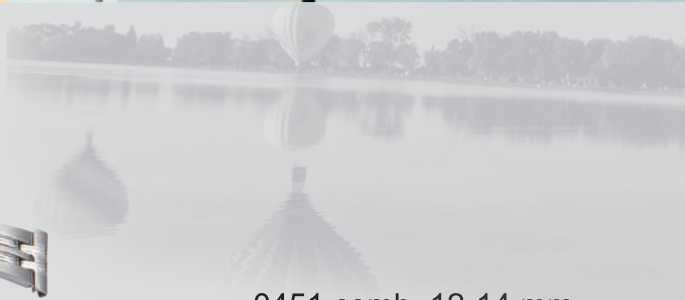


0669 PVD bic. 12-14 mm



0676 PVD gelb 12-14 mm



**Damen Elegant**

0451 comb. 12-14 mm



0453 hgp bic. 12-14 mm



0677 PVD gelb 12-14 mm



## Herren Sportiv

Semi Solid



1982 spezial 22-24 mm

Semi Solid



2126 PVD gelb 22-24 mm

Solid



0139 satin 20-22 mm

Solid



1413 comb. 20-22 mm

Semi Solid



1967 spezial 22-24 mm

Solid look



0620 sand 27-30 mm

Herren Sportiv



Solid look

0633 pol. 22-24 mm



Solid look

0634 spezial 22-24 mm

Solid look

0624 comb. 28-32 mm



Solid look

0626 comb. 21-24 mm



Solid look

1414 comb. 20-22 mm



Solid look

0625 comb.-schwarz 20-22 mm





## Herren Sportiv

Solid look



1973 comb. 20-22 mm

Solid look



0464 comb. 20-22 mm

Solid look

0461 comb. 24-26 mm  
0460 comb. 28-30 mm

Solid look



0630 spezial 22-24 mm

Solid look



0629 satin 22-24 mm

Solid look



1966 comb. 20-22 mm

Herren Sportiv



1627 comb. 18-20 mm

**Solid**



1412 comb. 20-22 mm

**Solid**

**Solid look**

1622 spezial 18-20 mm



**Solid look**

1410 comb. 18-20 mm



**Solid look**

1623 comb. 18-20 mm



**Solid look**

1624 1 mic. bic. 18-20 mm



## Herren Sportiv

1411 comb. 20-22 mm



1416 1 mic. bic. 20-22 mm



1750 comb. 21-24 mm



1746 spezial 20-22 mm



1438 comb. 24-26 mm



1438S PVD schwarz 24-26 mm





Herren Sportiv



0631 comb.-sand 26-30 mm

Taucher / Scuba

4 Drücker



1439 comb. 20-22 mm

4 Drücker



1440 comb. 20-22 mm

4 Drücker



1446 comb. 18-20 mm

4 Drücker



1447 comb. 18-20 mm

## Herren Sportiv

### Wechselanstoß



0151 comb. 20 mm  
6 Paar Anstöße



0152 comb. 20 mm  
6 Paar Anstöße



0153 comb. 20 mm  
6 Paar Anstöße

### Wechselanstoß

0150 spezial 20 mm



1406 - 1404 Anstoß  
passend zu 0150  
spezial gerade 18, 20, 22 mm



1403 - 1401 Anstoß  
passend zu 0150  
spezial rund 18, 20, 22 mm



Herren Sportiv



Solid look

0660 comb. 18-20 mm



Solid look

0661 PVD bic. 18-20 mm



Solid look

0657 spezial 18-20 mm

Solid look

0653 spezial 20-22 mm



Solid look

0658 comb. 24-26 mm



Solid look

0659 PVD bic. 24-26 mm





**Herren Sportiv****XL**

2103 comb.-sand 20-22 mm xl  
0231 comb.-sand 20-22 mm



0373 PVD bic. 20-22 mm



1415 comb.18-20 mm



0608 comb.-sand 18 mm  
0493 comb.-sand 18-20 mm

Herren Sportiv

XL



- 0602 comb. 18 mm
- 0432 comb. 18-20 mm xl
- 0431 comb. 18-20 mm

XL



- 0433 comb. 20-22 mm xl
- 0434 comb. 20-22 mm



## Herren Sportiv

0601 comb. 18 mm  
0439 comb. 18-20 mm



0607 satin 18 mm  
0603 satin 20 mm  
0438 satin 20-22 mm



XL

0491 comb. 20-22 mm xl  
0492 comb. 20-22 mm



0409 comb. 20-22 mm tel.



0410 hgp bic. 20-22 mm tel.



## Herren Sportiv



0664 comb.-sand 18-20 mm



0665 PVD bic. 18-20 mm

0483 comb. 20-22 mm



0484 hgp bic. 20-22 mm



0672 PVD gelb 20-22 mm



**Herren Sportiv**

0476 comb. 18-20 mm



0477 hgp bic. 18-20 mm



0449 spezial 20-22 mm



0673 PVD gelb 20-22 mm

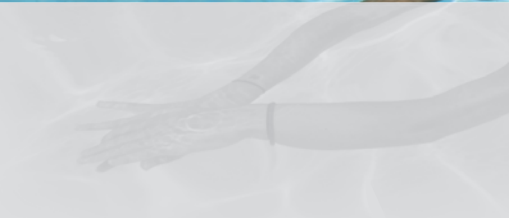


0605 comb. 18 mm



0457 comb. 18-20 mm

Herren Sportiv



0604 comb. 18 mm



0456 comb. 18-20 mm



0232 comb. 16-18 mm





## Damen Sportiv

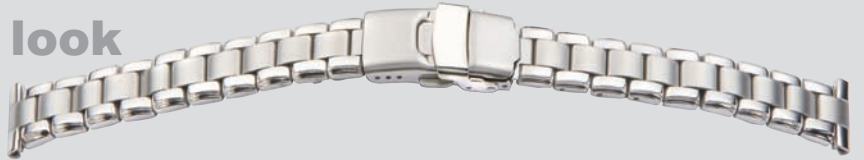
### Solid look

0465 satin 14-16 mm



### Solid look

0466 spezial 14-16 mm



1717 comb. 14-16 mm



1718 1 mic. bic. 14-16 mm



0642 pol. 13-16 mm



0642S PVD schwarz 13-16 mm



0678 PVD gelb pol. 13-16 mm



1965 spezial 14-16 mm

Damen Sportiv



Wechselanstoß



0688 comb. 14 mm



0612 PVD bic. 14 mm



0689- 0691 passend zu # 0688 comb. gerade 12,14,16 mm



0613- 0615 passend zu # 0612 PVD bic. gerade 12,14,16 mm



0692-0694 passend zu # 0688 comb. rund 12,14,16 mm



0616- 0618 passend zu # 0612 PVD bic. rund 12,14,16 mm

## Damen Sportiv

0670 comb.-sand 13-16 mm



0671 PVD bic. 13-16 mm



0489 comb. 12-14 mm



0490 PVD bic. 12-14 mm



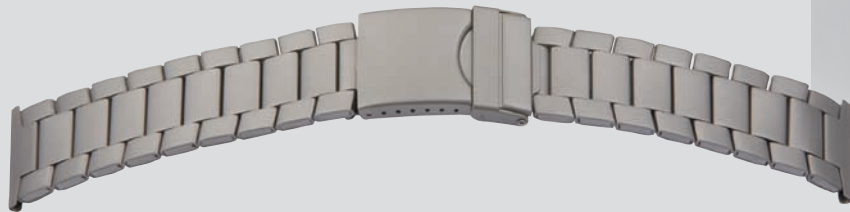
0486 comb. 14-16 mm



0485 spezial 14-16 mm



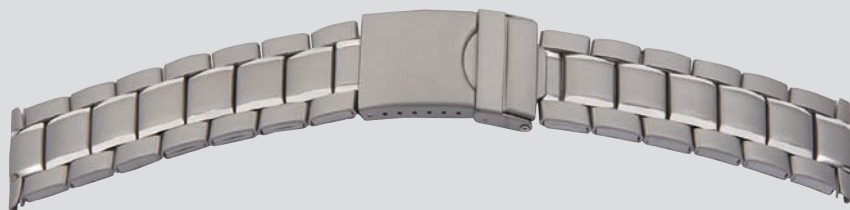
# Titan



1640 Titan 18-20 mm



1639 Titan 18-20 mm



1635 Titan comb. 18-20 mm

1638 Titan 20-22 mm



1641 Titan comb. 20-22 mm



1643 Titan 14-16 mm



1642 Titan 12-14 mm







**BEAR**  
Uhrband GmbH

Niels-Bohr-Str. 17  
D- 97941 Tauberbischofsheim

Tel. Nr. +49 (0)9341 / 8485100  
Fax Nr. +49 (0)9341 / 845940  
E-Mail [info@bear-uhrband.com](mailto:info@bear-uhrband.com)  
[www.bear-uhrband.com](http://www.bear-uhrband.com)

